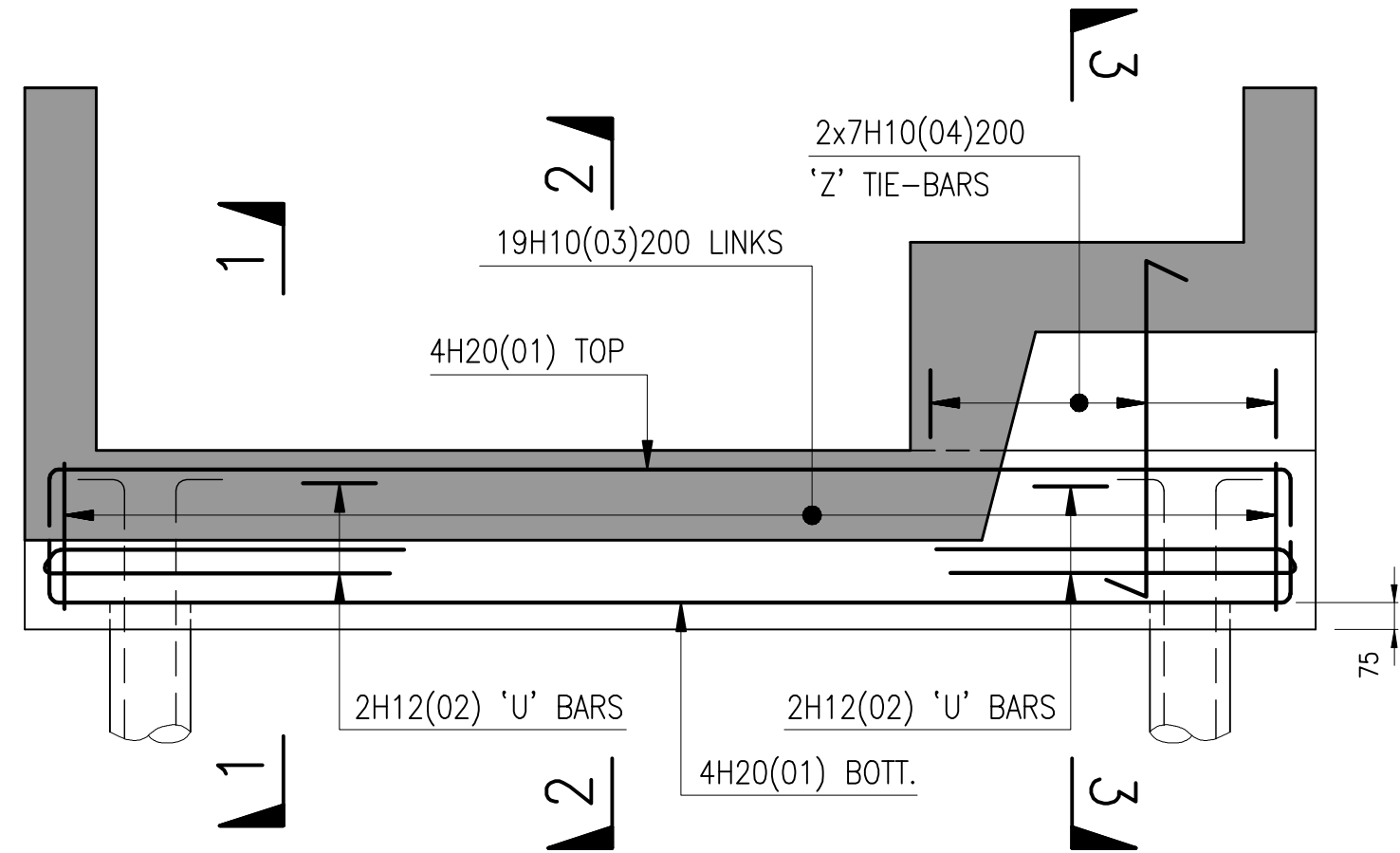
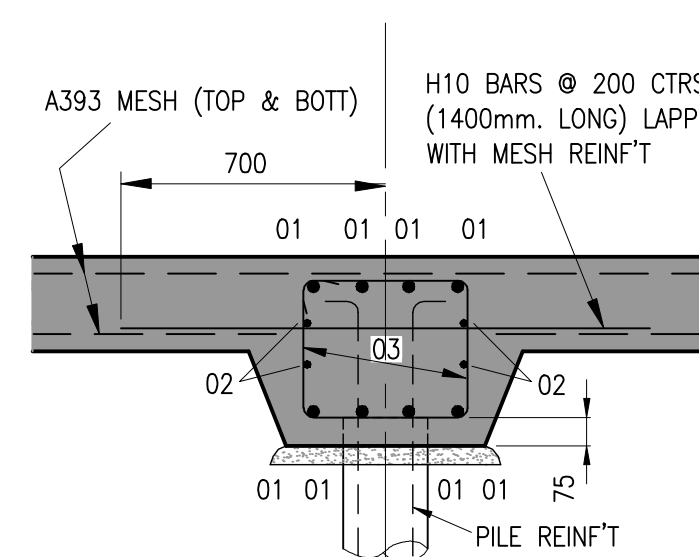


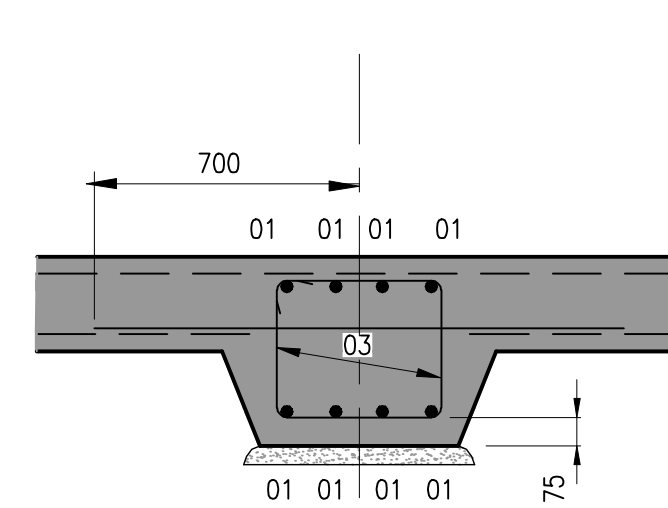
ELEVATION ON GROUND BEAM/PILE CAP TYPE 'A'
(7 No. TOTAL)
1:20



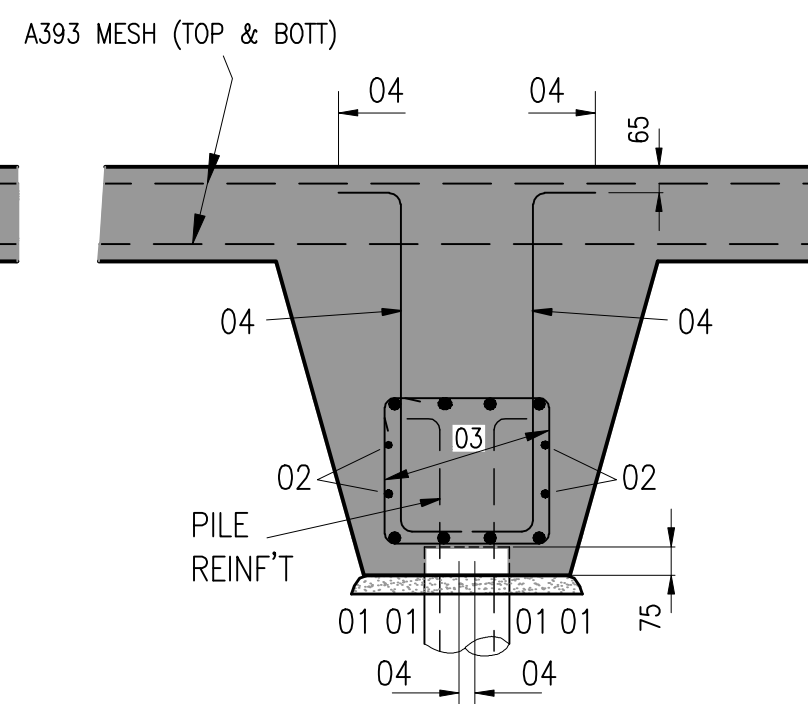
ELEVATION ON GROUND BEAM/PILE CAP TYPE 'B'
(2 No. TOTAL)
1:20



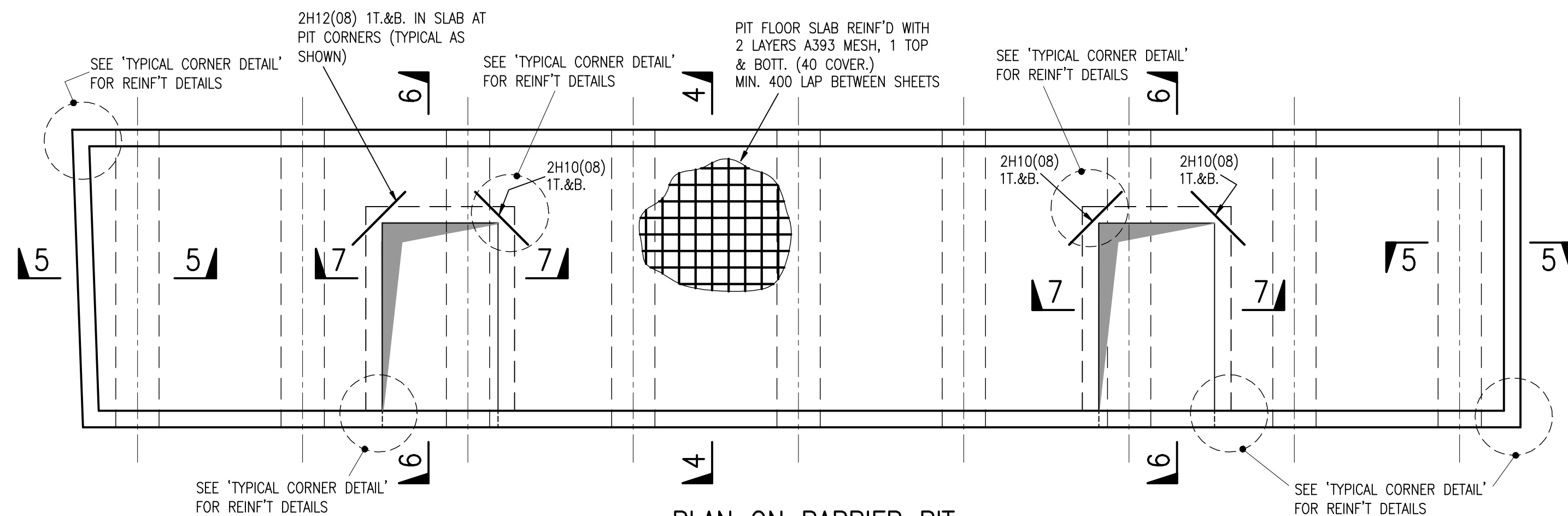
SECTION 1-1
1:20



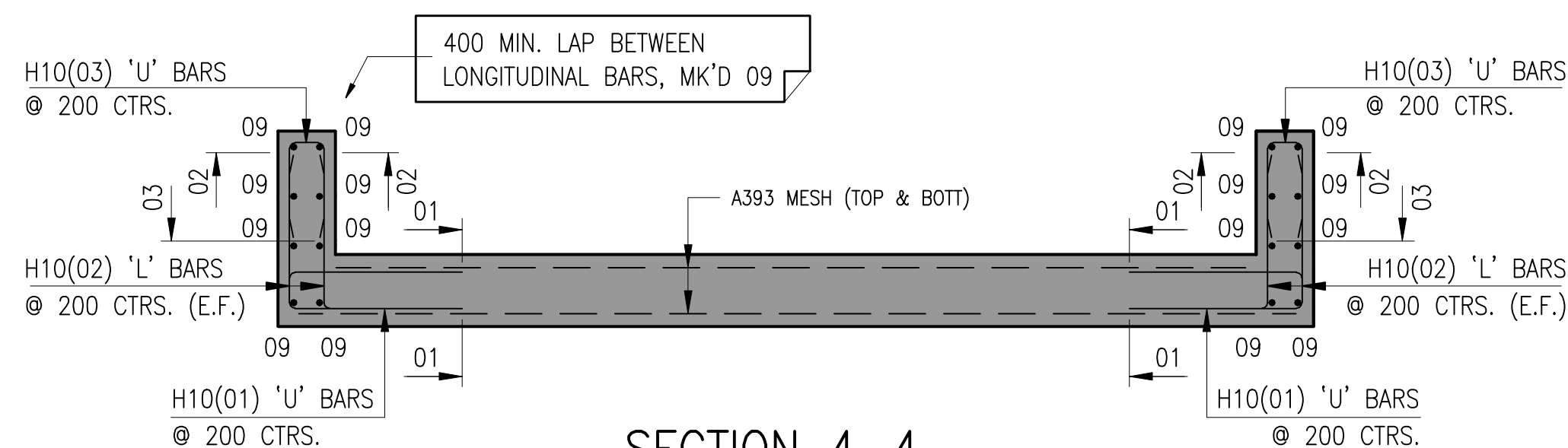
SECTION 2-2
1:20



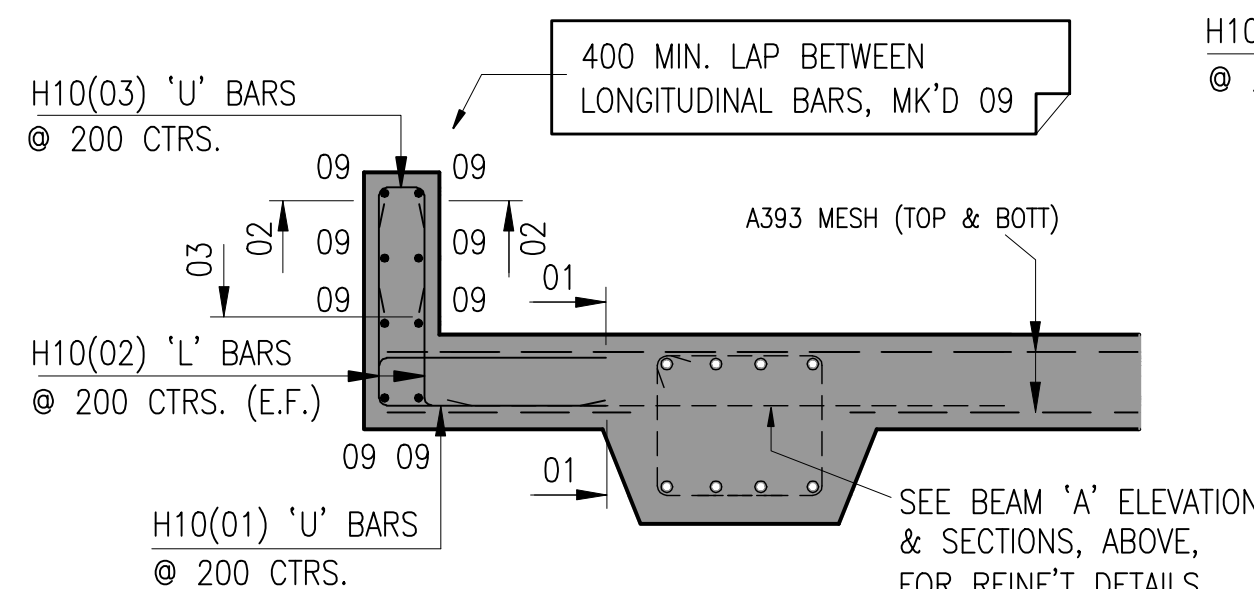
SECTION 3-3
1:20



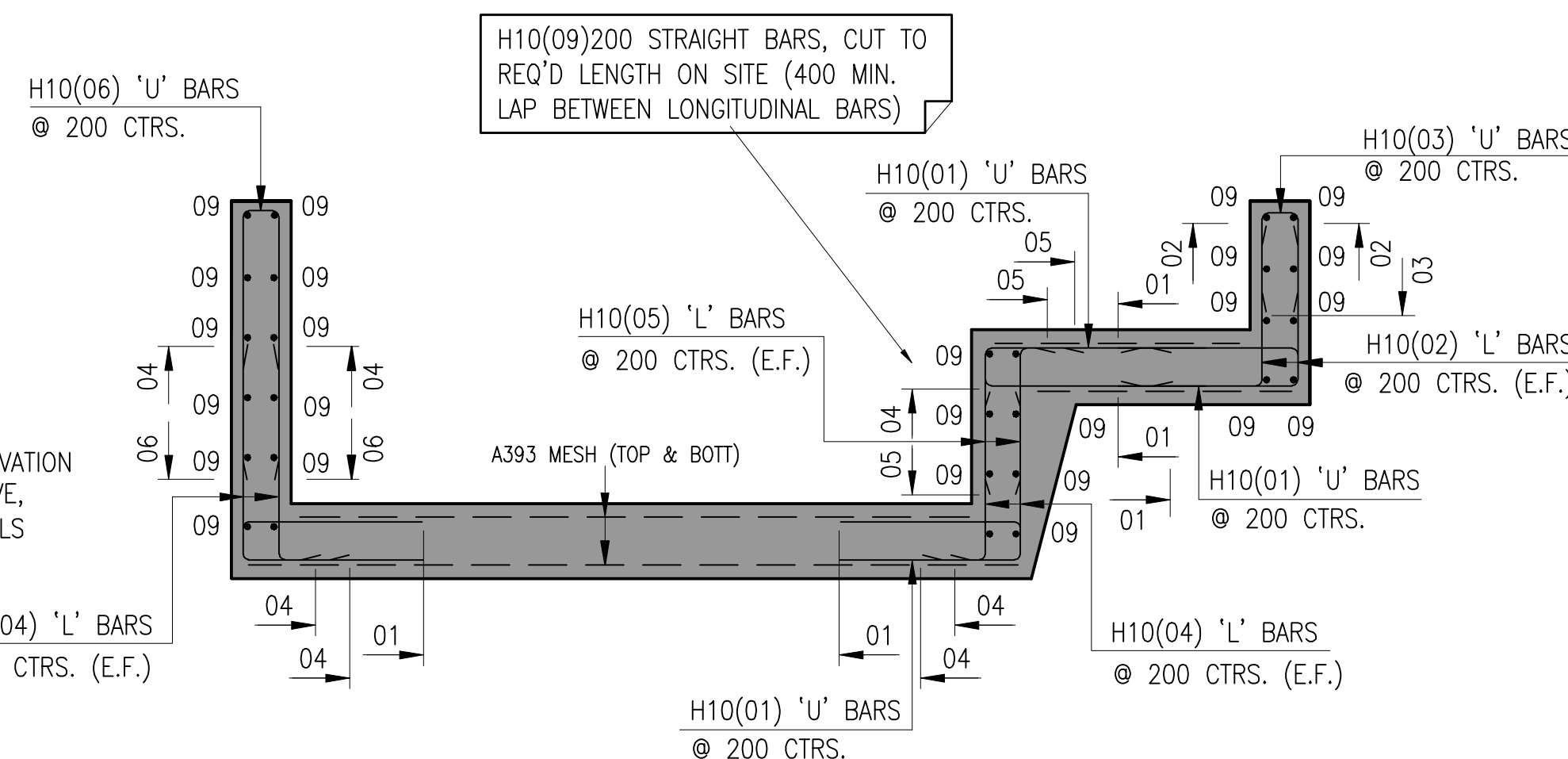
PLAN ON BARRIER PIT
1:50



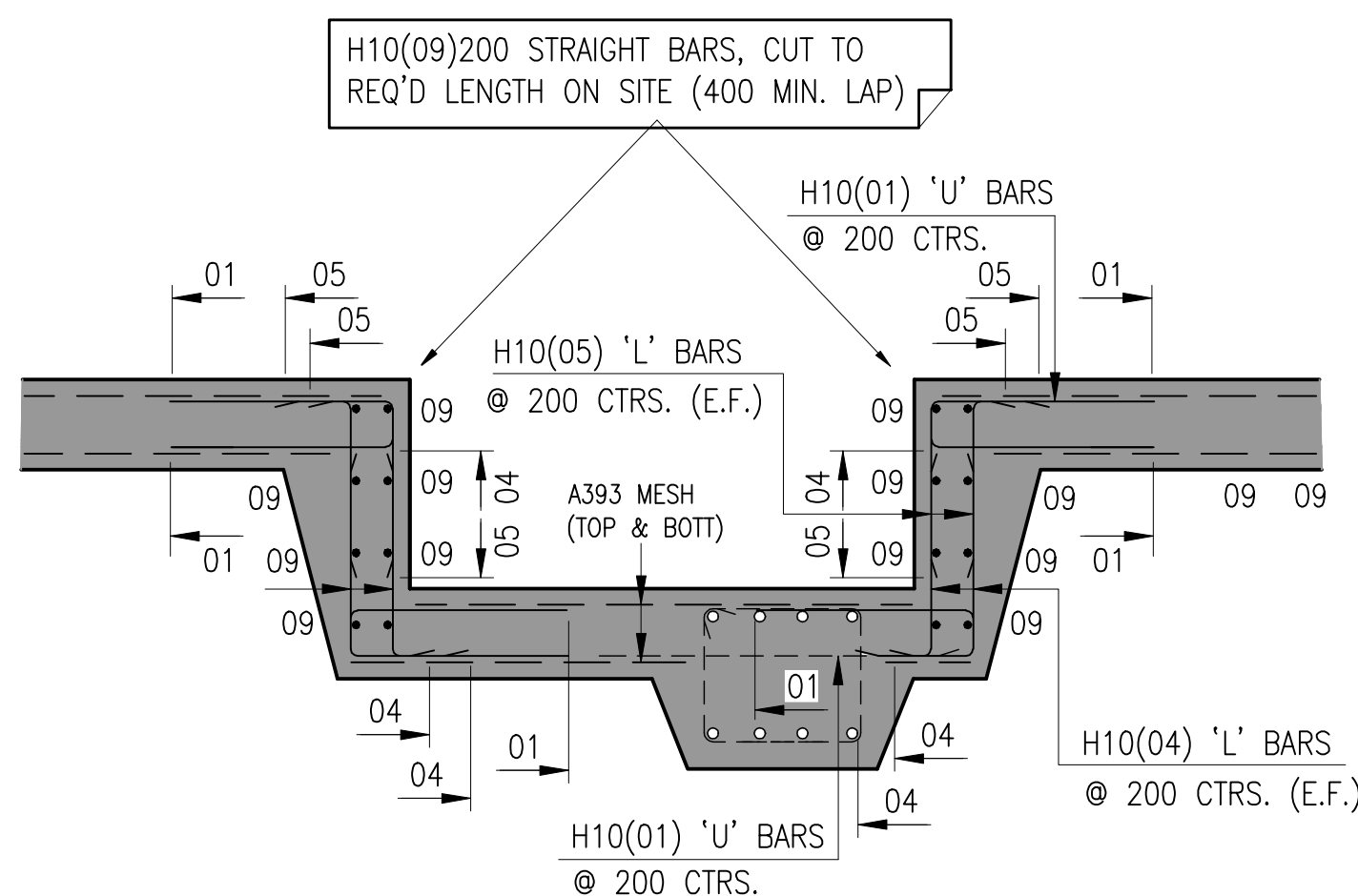
SECTION 4-4
1:20



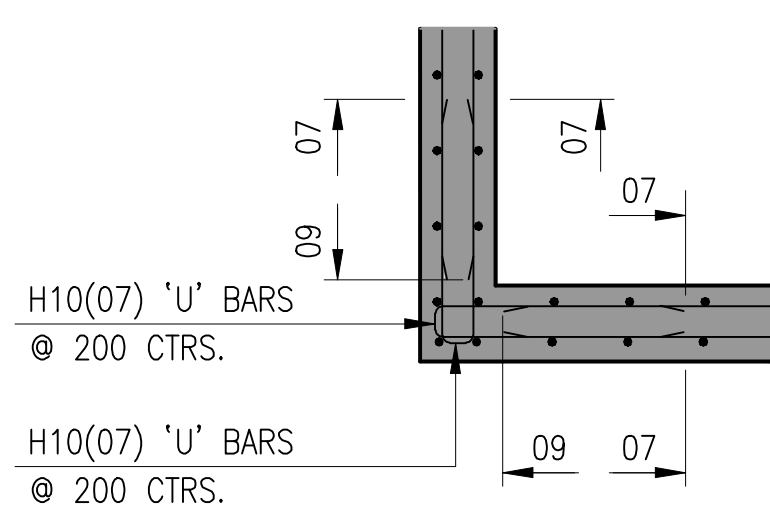
SECTION 5-5
1:20



SECTION 6-6
1:20



SECTION 7-7
1:20



TYPICAL CORNER DETAIL
1:20

NOTES.

CONCRETE NOTES:

- 1 ALL MATERIALS AND WORKMANSHIP TO COMPLY WITH SEJC CONSULTING ENGINEERS STANDARD SPECIFICATION FOR REINFORCED CONCRETE AND ALL RELEVANT BRITISH STANDARDS
- 2 THIS DRAWING TO BE READ IN CONJUNCTION WITH ALL RELEVANT ARCHITECTS AND SEJC CONSULTING ENGINEERS DRAWINGS
- 3 FOR DETAILS OF CONCRETE MIX REFER TO SEJC STANDARD CONCRETE SPECIFICATION
- 4 ALL CONCRETE TO BE VIBRATED IN ACCORDANCE WITH SEJC CONSULTING ENGINEERS STANDARD SPECIFICATION FOR REINFORCED CONCRETE
- 5 REINFORCEMENT SHOWN IS SCHEDULED ON BAR LIST(S) 501180/20-317 - 01& 02
- 6 CONCRETE COVER TO REINFORCEMENT 40mm, UNLESS NOTED OTHERWISE
- 7 ABBREVIATIONS:
H(12) DENOTES HIGH YIELD TYPE 2 BARS
R DENOTES MILD STEEL ROUND BARS
AB ALTERNATE BARS
ABR ALTERNATE BARS REVERSED
ABS ALTERNATE BARS STAGGERED
NF NEAR FACE
FF FAR FACE
EF EACH FACE
T TOP FACE
B BOTTOM FACE
- 8 ALL REINFORCEMENT TO BE HIGH YIELD TYPE B500A, B500B OR B500C RIBBED BARS TO BS4449:2005
- 9 BENDING AND SCHEDULING OF REINFORCEMENT TO BE IN ACCORDANCE WITH BS 8666:2005

MK	REVISIONS	BY	DATE	CHK
----	-----------	----	------	-----

STATUS:—

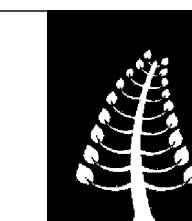
AS BUILT

DRAWN BY	DATE
CHECKED BY	DATE
PROJECT ENGINEER	DATE

CLIENT

CTP & JAMES

PROJECT
WAKEFIELD WATERFRONT
BUILDING 20



SEJC Consulting Engineers
Consulting Structural & Civil Engineers

Sanderson House, Station Road, Horsforth, Leeds LS18 5NT
Telephone 0113 2590090 Fax 0113 2586640

TITLE
FLOOD BARRIER TYPE 'C'
FOUNDATION & PIT RC. DETAILS

SCALES
AS SHOWN (A1)

CONTRACT No	DRG No		
501180C	20-317		